

T H E R M O M E T R I C S
A COMMITMENT TO EXCELLENCE

Product Spotlight



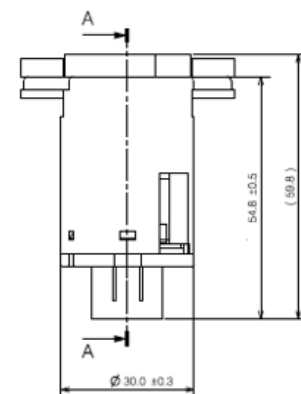
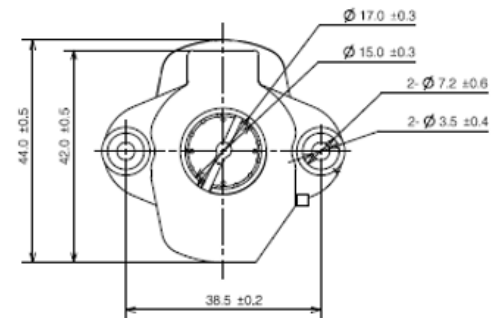
Active In-car Sensor(AIF003A)

Overview

These temperature sensors monitor the temperature of air in the cabin of vehicles. The sensor provides a signal output that is proportional to the cabin temperature and a steady air flow sucked by motor and enable to detect more accurate signal to FATC system which can make the driver feel more comfortable and optimum temperature.

Features

- Supply Voltage : DC 12.0V(9V~16V)
- Operating Temperature Range: -40°C to 85°C
- High sensitivity and Low noise
- High accuracy and long-term stability
- Integrated connector
- Field proven design
- Easy to attach and repair
- Alternate RvT curves per request
- RoHS compliant (Directive 2002/95/EC)



Applications

- All FATC Vehicles
- Active Temperature Sensor Using Motor