

T H E R M O M E T R I C S  
A COMMITMENT TO EXCELLENCE

# Product Spotlight



## MSG PRESSURE SENSOR SUB MODULE

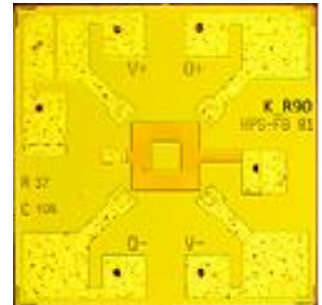
### Overview

The pressure sensor is a sensor mounted on a fuel rail, a hydrogen nozzle, or a hydrogen tank to detect pressure.

The piezo-resistive type MSG is a structure that is bonded to the metal sensor body. It is a sensor that deforms the diaphragm of the metal sensor body by pressure from the outside and changes and detects the electrical resistance of the MSG according to the pressure.

### Features

- Full Whiston Bridge device using MEMS technology
- Pressure Range : 30 ~ 900bar.g
- Temp. Range
  - -40°C ~ 100°C (SUS 316L)
  - -40°C ~ 140°C (SUS 630)
- Pressure Sensor Port material
  - UNS S17400 , SUS630 , 1.4542 X5CrNiCuNb17 4
  - AISI 316L , SUS 316L



### Applications

- Automotive
- Industrial